

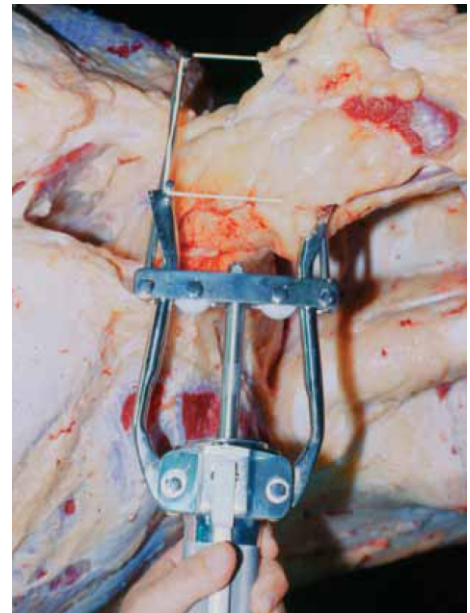
# BUNG RING EXPANDER MODEL BRE-1 Part Number : 4021002



The Jarvis Model BRE-1 pneumatically powered bung ring expander. and general use.

- Used for expanding and installing bung rings in the beef industry.
- Eliminates contamination from the bung areas by sealing the bung.
- Mechanically seals bung with a ring - reduces human error during bunging operation.
- Lightweight and flexible for optimum operator comfort.
- All stainless construction for maximum hygiene.
- Meets national and international requirements for hygiene and safety.

**HYGIENIC - LIGHTWEIGHT - FLEXIBLE**



#### HEADQUARTER

PT ARSI INDO GRAHA  
INDONESIA

- ☎ +6281270762750
- ✉ info@arsiindograha.com
- 🌐 www.arsiindograha.com

#### GLOBAL OFFICE

RC INDO GROUP LIMITED  
RWANDA

- ☎ +250794034060
- ✉ info@rcrwanda.com
- 🌐 www.rcrwanda.com

ARSYI GLOBAL L.L.C-FZ  
DUBAI

- ☎ +971507169760
- ✉ info@arsyi.com
- 🌐 www.arsyi.com

# BUNG RING EXPANDER MODEL BRE-1 Part Number : 4021002

<b>Specification</b>		
Drive	Pneumatic	
<b>Model BRE-1</b>		
Operating Pressure	50 - 100 psi	3.4 - 6.9 bar
Air Consumption (per rotation 100 psi / 6.9 bar)	0.026 Ft <sup>3</sup>	0.47 L
Dimension Opening	3.8 x 3.9 in	98 x 100 mm
Control Handle	Single Trigger	Pneumatic
Overall Length	14 in	356 mm
Overall Width	5.2 in	132 mm
Weight	3.5 lbs	1.6 kg
<b>Equipment Selection And Accessories</b>		<b>Order Number</b>
Model BRE - 1		4021002
Air Hose	length 16 ft / 5m	1059002
Ring stoppers (sold per pack of 3000)		
	0.50 in I.D. x 0.812 in O.D	1013162
Air Filter / Regulator / Lubricator		3022003
Air Mist Oil		
	1 pt / 0.5 L	1062010
	1 gal / 4 L	1062011
	5 gal / 20 L	1062012



**HEADQUARTER**

PT ARSI INDO GRAHA  
INDONESIA

+6281270762750

info@arsiindograha.com

www.arsiindograha.com

**GLOBAL OFFICE**

RC INDO GROUP LIMITED  
RWANDA

+250794034060

info@rcrwanda.com

www.rcrwanda.com

ARSYI GLOBAL L.L.C-FZ  
DUBAI

+971507169760

info@arsyi.com

www.arsyi.com